

**ITEM 42. PARKING – TIMED PARKING – CRESSY STREET ROSEBERY**

**TRIM RECORD NO: 2017/509208**

**RECOMMENDATION**

It is recommended that the Committee endorse the allocation of parking on the southern side of Cressy Street, Rosebery, between the points 10 metres and 49.5 metres (seven car spaces) east of Dunning Avenue, as “2P 8am-8pm”.

**VOTING MEMBERS FOR THIS ITEM**

<b><i>Voting Members</i></b>	<b><i>Support</i></b>	<b><i>Object</i></b>
City of Sydney		
Roads and Maritime Services		
NSW Police – Redfern LAC		
Representative for the Member for Heffron		

**DECISION**

**BACKGROUND**

The Development Consent for 29-31 Dunning Avenue, Rosebery (D/2016/77) requires the Applicant to submit a signage plan for kerbside parking arrangements for the site’s frontage along Cressy Street, to be referred to the Local Pedestrian, Cycling and Traffic Calming Committee.

**COMMENTS**

The City has approved the redevelopment of 29-31 Dunning Avenue, Rosebery.

The kerb space on the southern side of Cressy Street, adjacent to the site, is currently unrestricted.

It is proposed to install parking restrictions to reflect the change in adjacent land use. As such, it is proposed to install “2P 8am-8pm” along the frontage of the redevelopment site. This change will comply with City’s Neighbourhood Parking Policy which recommends a two-hour parking limit as it better balances the aim of deterring commuter parking with the needs of households for visitors, carers and tradespeople.

**CONSULTATION**

The Applicant must notify adjacent properties at least seven days prior to the implementation of the changes.

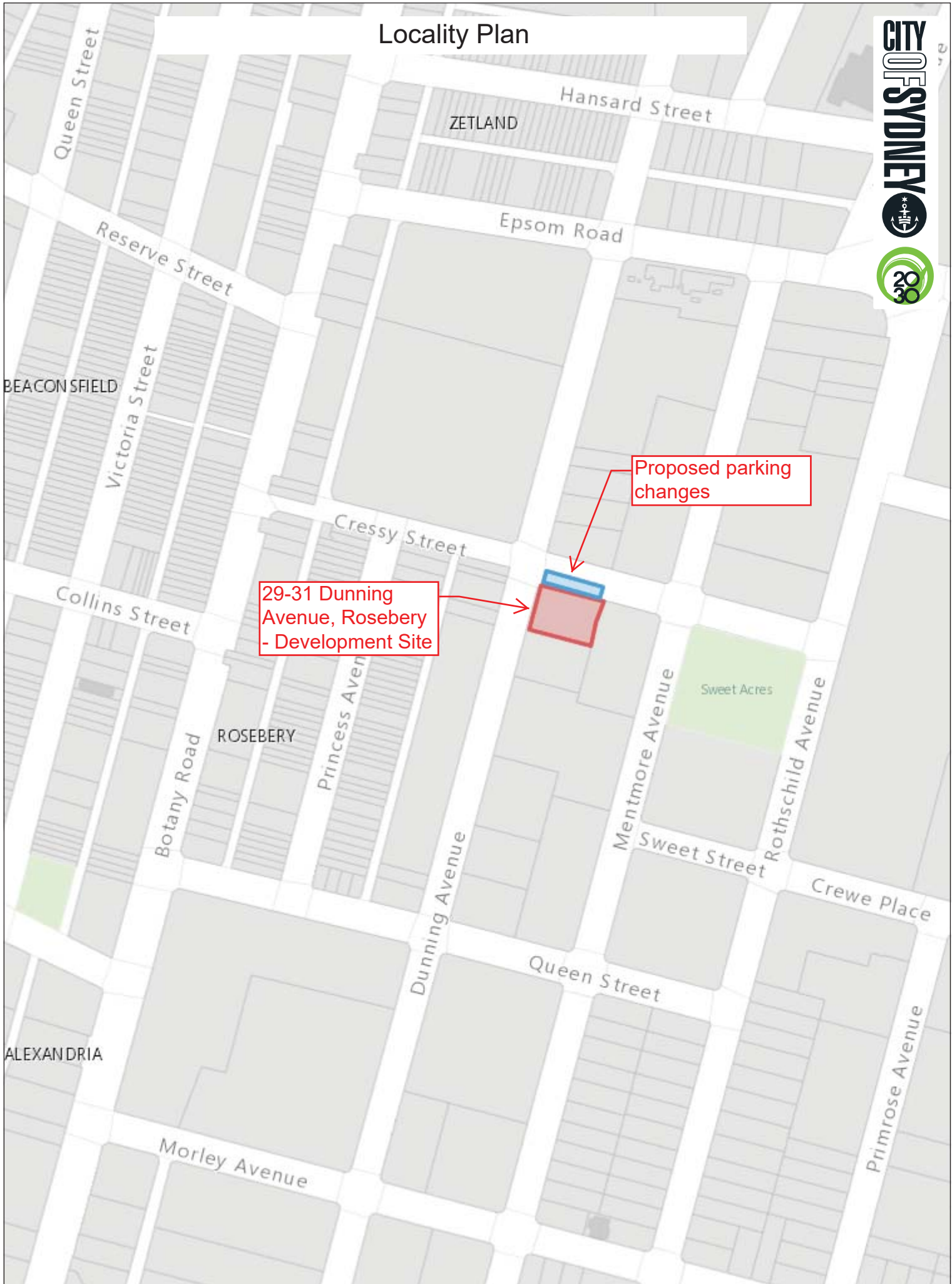
**FINANCIAL**

All costs associated with the proposal will be borne by the Applicant.

Parking – Timed Parking – Cressy Street Rosebery

James Nguyen, Engineering Traffic Officer

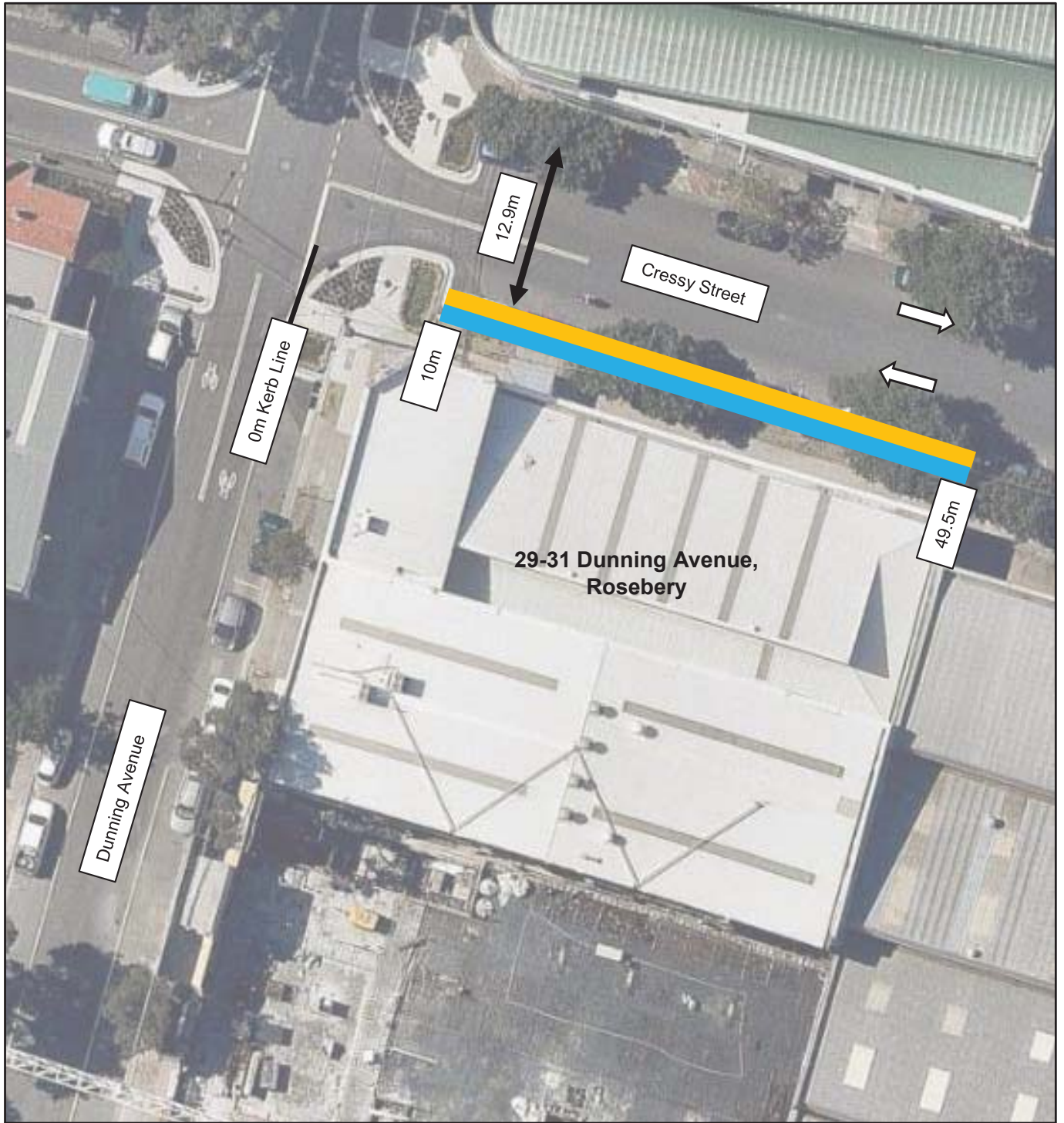
# Locality Plan



29-31 Dunning Avenue, Rosebery - Development Site

Proposed parking changes





**Legend**

- "2P 8am-8pm" (**Proposed**)
- Unrestricted (**Existing**)

**PARKING PROPOSAL**

**CRESSY STREET, ROSEBERY**

